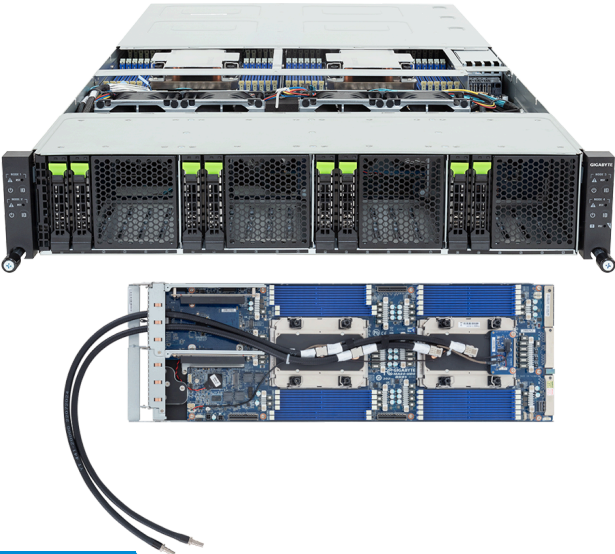


# H274-A81-LAZ1

High Density Server - Intel® Xeon® 6 - 2U 4-Node DP 8-Bay Gen5 NVMe/SATA/SAS-4 DLC



### Key Features

- Direct liquid cooling solution with leak detection
- 2U 4-node rear access server system
- Dual Intel® Xeon® 6900-Series Processors per node
- 12-Channel DDR5 RDIMM / MRDIMM, 24 x DIMMs per node
- 8 x 1Gb/s LAN ports via Intel® I350-AM2
- 8 x 2.5" Gen5 NVMe/SATA/SAS-4 hot-swap bays
- 4 x LP PCIe Gen5 x16 slots
- 4 x LP PCIe Gen5 x16 slots (optional)
- Dual 3600W 80 PLUS Titanium redundant power supply

### Applications

High-Performance Computing Server, High Converged Server, Servers for Hybrid/Private Cloud...

### Specification

Dimensions	2U 4-Node - Rear access (W447 x H86.8 x D895 mm)	RAID	Require RAID add-in cards Onboard VROC key header
Motherboard	MA84-HD0	PCIe Expansion Slots	4 x LP PCIe Gen5 x16 4 x Optional LP PCIe Gen5 x16
CPU	Intel® Xeon® 6 Processors - Intel® Xeon® 6900-Series Processors Dual processor per node, TDP up to 500W	I/O Ports	Front: 1 x CMC status LED, 1 x CMC reset button Rear: 8 x USB 3.2 Gen1, 4 x Mini-DP, 8 x RJ45, 4 x MLAN
OS Compatibility	<a href="#">OS Support List</a>	Backplane Board	PCIe Gen5 x4 or SATA 6Gb/s or SAS-4 24Gb/s
Socket	8 x LGA 7529 (Socket BR)	TPM	4 x TPM headers (SPI), Optional TPM2.0 kit: CTM012 4 x PRoT connectors (only enabled on RoT SKU)
Chipset	System on Chip	Power Supply	Dual 3600W 80 PLUS Titanium redundant power supply AC Input: 200-240V  *The system power supply requires SDG400 power cord.
Memory	12-Channel DDR5 RDIMM/MRDIMM, 96 x DIMMs [RDIMM] Up to 6400 MT/s [MRDIMM] Up to 8800 MT/s [1]  [1] MRDIMMs are supported only on select Intel® Xeon® 6 processors with P-cores.	System Fans	4 x 80x80x38mm
LAN	8 x 1Gb/s LAN (4 x Intel® I350-AM2), Support NCSI 4 x 10/100/1000 Mbps Management LAN	Operating Properties	Operating: 10°C to 35°C, 8% to 80% (non-condensing) Non-operating: -40°C to 60°C, 20% to 95% (non-condensing)  *To ensure system stability and prevent condensation, when the relative humidity exceeds 50%, the coolant inlet temperature must be higher than the dry-bulb temperature and it should not exceed 45°C.
Video	Integrated in ASPEED® AST2600 x 4 - 4 x Mini-DP	Packaging Content	1 x H274-A81-LAZ1 4 x CoolIT CPU cold plate loops 1 x Mini-DP to D-Sub cable 8 x Carriers 1 x L-shape Rail kit
Storage	Front hot-swap: 8 x 2.5" Gen5 NVMe/SATA/SAS-4 [1]  [1] Storage card is required to support SATA and SAS drives.	Ordering Part Numbers	6NH274A81DR000LAZ1*



Learn more at: <https://www.gigabyte.com/Enterprise>  
\* All specifications are subject to change without notice. Please visit our website for the latest information.  
\* All trademarks and logos are the properties of their respective holders.  
© 2026 Giga Computing Technology Co., Ltd. All rights reserved.  
Last updated: Jan 27, 2026

Designed by

